



ANNUAL REPORT FY2016



Opening Doors to Opportunity

Providing housing and supportive services in Northern Virginia for 36 years

Our Mission:

Pathway Homes embodies the spirit of recovery: embracing an attitude of hope, self-determination and partnering with each individual on their personal journey toward achieving self-fulfillment and realizing their dreams.

We fulfill our mission by making available to individuals with mental illness and co-occurring disabilities a variety of non-time-limited housing and services to enable them to realize their individual potential.

President's Message

“It is not by muscle, or speed, or physical dexterity that great things are achieved, but by reflection, force of character and judgment” - Marcus Tullius Cicero



What's in a reflection? Reflection is said to show the effect, character, or existence of something else. The doors we opened this past year throughout our community to provide non-time-limited housing and supports to more than 500 individuals is a reflection of Pathway Homes' mission in action. It is also an illustration of how we partner with each individual on his or

her road to recovery, growth and resilience regardless of each person's pace.

Pathway Homes' mission remains clear: to provide a broad base of the highest quality homes and individualized services for all adults with serious mental illnesses and co-occurring disabilities in the Northern Virginia region, and in Central Florida. As such we continue to expand these highly flexible and tailored services through community collaboration, charitable support, an expanded role of residents and their families, and a network of influential board members and friends.

In the spring of last year our Continuum of Care (CoC) received \$1.2 million in grant funding from the Department of Housing and Urban Development (HUD) to provide permanent supportive housing to chronically homeless individuals in Fairfax County. This was the largest HUD funding ever awarded to any CoC in Virginia and it was used to move 55 men and women from emergency shelters and the streets to their very own homes. This spring Pathways received a grant from the Virginia Department of Behavioral and Developmental Health Services in the amount of \$1,407,576 awarded over two years, to house an additional 35 individuals in permanent supportive housing in partnership with Fairfax, Prince William, and Alexandria City Community Services Boards. As a first-time non-profit grant recipient in our region, we were able to make a significant investment in stabilizing the lives of unstably housed, high frequency users of emergency rooms and hospitals, and create diversion opportunities for many individuals with severe mental illnesses in our community who would otherwise end up in jails.

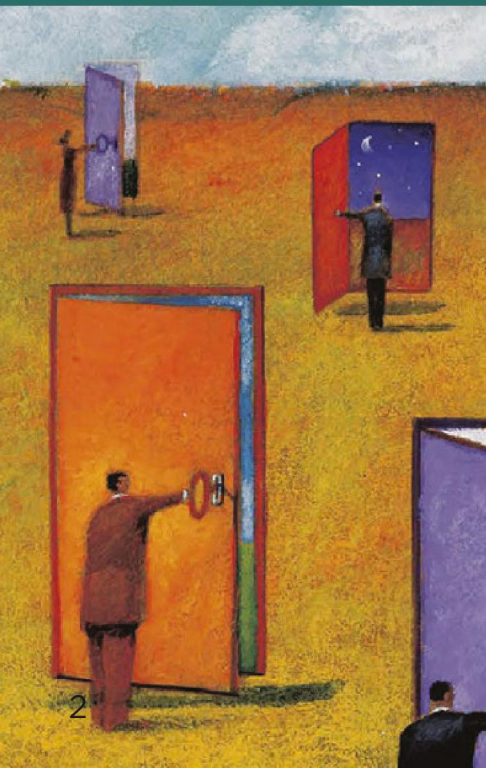
Also this past year, our education and advocacy efforts were reflected in a visit from Virginia state Senator Creigh Deeds and the commission tasked with studying the provision and delivery of mental health services in the Commonwealth. The highly anticipated visit resulted in our ability to touch thousands and open even more doors. The visit, highlighting the consumer voice and Pathways' housing first, harm reduction and recovery-integrated model, was featured on the NBC 4 Changing Minds documentary and paved the way for Pathways to participate in the NBC 4 Health and Fitness Exposition a few months later.

As we look back on the past year, we recognize that reflection is important but future pathways must be navigated to sustain and address the significant unmet need of our region. We therefore strive to maintain our role as a best-practice, innovative and collaborative non-profit partner in Virginia and beyond. The ability to continue development of permanent supportive housing will be an important part of the efforts to achieve that goal. Pathway Homes will continue to play a critical role, not only in these endeavors, but most importantly, in helping individuals with serious mental illnesses and other co-occurring disorders to live to their full potential.

We are grateful to our dedicated board, staff, and volunteers who provide countless hours to those we serve. Thank you for continuing to support and uplift the lives of the most vulnerable individuals in our community. We thank those we serve, especially those who share their personal stories to give meaning to what we do. We could not have achieved this success without you, and we know that the strength and longevity of our agency is because of you! We welcome our new Giving Society members who have made multi-year pledges to support Pathways, now and in the future, and we thank all who are committed to supporting our mission. We look forward to working with you all, in opening doors, changing lives and enhancing our community!



Sylisa Lambert-Woodard, EdD, LCSW, LSATP, MAC
President and Chief Executive Officer





It can happen to anyone. Corinne Yznaga was by all accounts successful. She worked as an international cultural affairs and protocol consultant. She was a published author. She owned two homes. She was active in her community. But life can turn on a dime, and

one day Corinne found herself with nothing, living briefly in her car until that, too, was gone. Instead, she then endured shelters, group camps, abuse, and multiple assaults. Separation and isolation deep in the forest may be lonely, but it was safe.

Her physical health began to deteriorate. There were multiple hospital visits; the last was a multi-day stay while being treated for pneumonia, a weakened immune system, and malnutrition. When discharged, Corinne weighed less than 100 pounds. Shortly afterward she was connected to Pathway Homes, and moved into one of our semi-independent living properties.

In the 3 years since, Corinne has recovered her health; learned to cope with and control the anxiety, depression, and PTSD brought on by her ordeals; and is on her unique path to recovery. Learning new computer skills is even helping her begin writing again. "The help I've received from Pathways is truly a gift. These last three years have been transformational. I feel like a caterpillar who has awakened from a long, dark sleep with wings unfurled, ready to fly and explore the world from this brand new perspective."



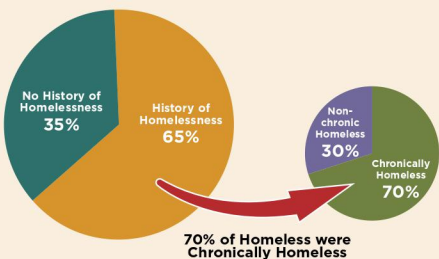
Sue Zywokarte is the very embodiment of hope and self-determination. Many young adults dream of a college education, the life experiences that come from a campus environment, and the promise of a successful future with a degree in hand. But for Sue, mental illness

would derail those dreams. Instead of joy and anticipation, Sue dealt with severe depression. Instead of classrooms, she found herself in a state mental hospital. Instead of the camaraderie of a dormitory, she endured the isolation of homelessness. Instead of planning for a future, she was hanging on for just one more day.

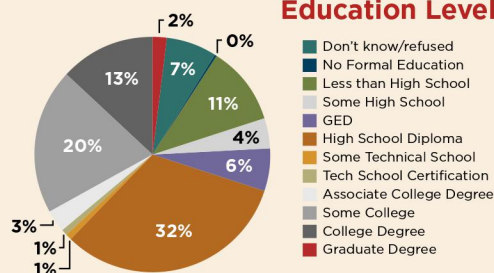
Sue came to Pathway Homes in 2002. The stability that comes with permanent supportive housing allowed her, with help from her counselors, to focus on treating her illness and managing her depression. With a renewed sense of self confidence, Sue set out to accomplish long-deferred dreams. She first completed requirements to earn an Associate's degree, then graduated from George Mason University in 2012 with a Bachelor of Science degree. This year she completed her Master's Degree, also at George Mason University. While fulfilling her personal goals, Sue is also aware of the services that made her journey possible. "I'm so grateful to Pathway Homes, for the opportunity they've given me. I want to give back in any way I can," says Sue, who has served as a consumer voice on Pathways' Board of Directors since 2006.

"Hope is so important to recovery," says Sue. "I share my experience to give others the reassurance that there is a better life ahead; that they can pursue their dreams again; and that yes, 'Recovery is Possible.'"

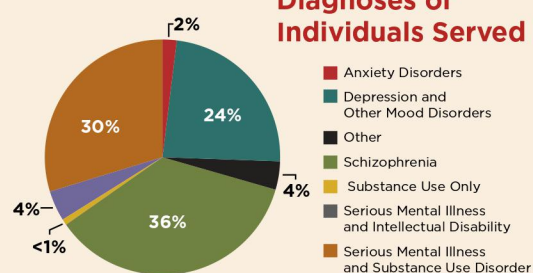
History of Homelessness



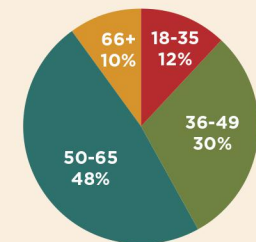
Education Levels



Diagnoses of Individuals Served

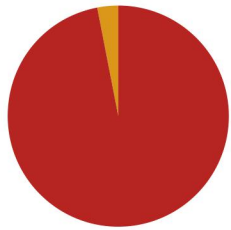


Age Distribution

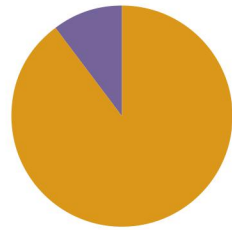


FY 2016 Consumer Outcomes

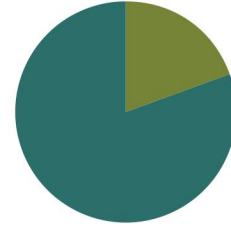
Measuring outcomes shows how our services make a difference in the lives of people we serve.



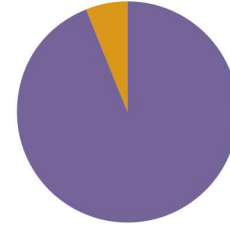
97%
remained in permanent housing



88%
remained out of psychiatric hospital



19%
were employed
(industry average 15 - 20%)



94%
reported overall satisfaction with the services they received

FY 2016 Financials

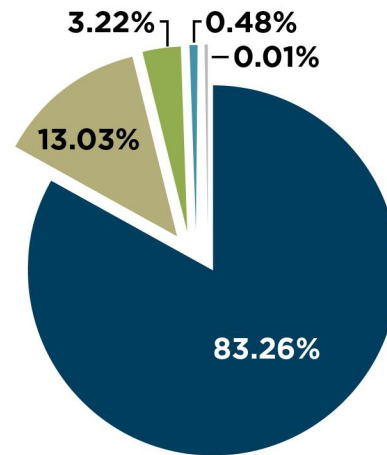
CohnReznick, a national Certified Public Accounting firm, performed audits as of June 30, 2016, for Pathway Homes, Inc. A summary of the audited Financial Statement is presented here.

SUPPORT AND REVENUE

Government Grants and Contracts	9,484,126
Fees and Rents	1,445,762
Contributions	330,498
Sublease and Other Income	38,919
Interest and Dividends	7,064
Total Support and Revenue	\$11,306,369

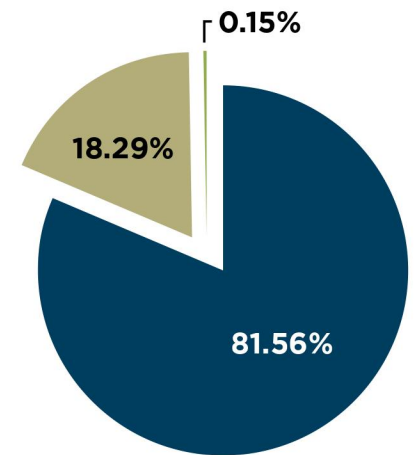
EXPENSES

Program Services	
24 Hour Residential Facilities	2,300,207
Supported Residential Facilities	6,975,464
Total Program Services	9,275,671
Management and General	1,643,842
Fund-raising and Development	25,231
Total Expenses	\$10,944,744



SUPPORT AND REVENUE

Government Fees & Grants.....	83.26%
Fees and Rent.....	13.03%
Contributions.....	3.22%
Sublease and Other Income...	0.48%
Interest and Dividends	0.01%



EXPENSES

Program Services.....	81.56%
Management & General.....	18.29%
Fund Raising	0.15%

Our continuum of services makes it possible for individuals to move from highly intensive to highly independent settings as their needs change. Our services result in measurable results over time!

SERVICES PROVIDED
Psychoeducation

SHORT-TERM IMPACT
Increased understanding of, and management of illness and symptoms

MEDIUM-TERM IMPACT
Ability to manage stressors and increased levels of independence

LONG-TERM OUTCOME
Remain in permanent supported housing or move to other permanent housing
Decreased need for hospitalization or risk of incarceration

SERVICES PROVIDED
Teach activities of daily living skills

SHORT-TERM IMPACT
Increased self-efficacy
Ability to meet basic daily needs with less support

MEDIUM-TERM IMPACT
Increased accessibility to stable housing opportunities

LONG-TERM OUTCOME
Remain in permanent supported housing or move to other permanent housing

SERVICES PROVIDED
Provide social skills training

SHORT-TERM IMPACT
Development of new or improved interpersonal skills

MEDIUM-TERM IMPACT
Increased ability to manage personal and landlord-tenant relationships

LONG-TERM OUTCOME
Remain in permanent supported housing or move to other permanent housing

SERVICES PROVIDED
Teach medication management skills

SHORT-TERM IMPACT
Increased understanding of medication effects and side effects

MEDIUM-TERM IMPACT
Increased motivation and ability to use medications appropriately

LONG-TERM OUTCOME
Management of symptoms in the community and decreased need for hospitalization or risk of incarceration

SERVICES PROVIDED
Provide job readiness skills training

SHORT-TERM IMPACT
Increased knowledge, skills, and confidence

MEDIUM-TERM IMPACT
Ability and confidence to apply for jobs

LONG-TERM OUTCOME
Employment and decreased dependence on benefits

SERVICES PROVIDED
Link with community resources

SHORT-TERM IMPACT
Improved access to community supports

MEDIUM-TERM IMPACT
Increased ability to manage health or financial challenges

LONG-TERM OUTCOME
Increased self-sufficiency and community integration

SERVICES PROVIDED
Provide advocacy/teach self advocacy

SHORT-TERM IMPACT
Increased access to benefits/services

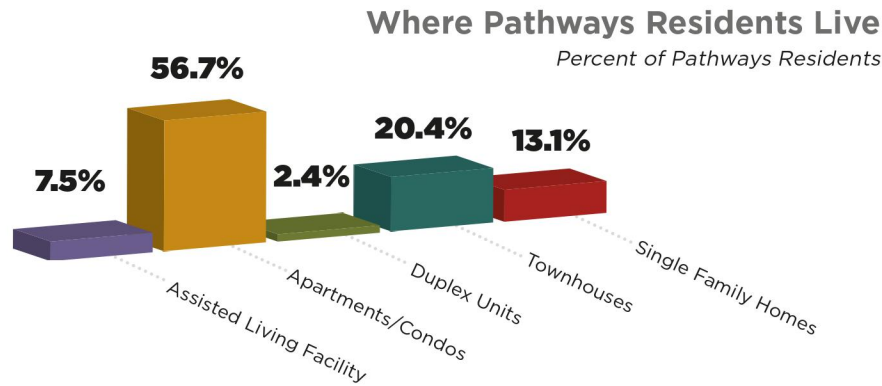
MEDIUM-TERM IMPACT
Continuity of healthcare

LONG-TERM OUTCOME
Improved quality of life
Reduced stigma



Pathways Housing Story

From the very beginning our work focused on the healing benefits of having a place to call home. What started out as one leased property, with two residents and one live-in counselor, has grown into a network of 259 owned, leased, or managed properties. From our two assisted-living facilities to apartments, condos, townhouses, and single-family dwellings, Pathways housed 496 men and women in fiscal year 2016.



Total Properties in Inventory		259
Properties Owned by Pathways		63
Condos		31
Duplex Units		4
Townhouses		17
Single Family Homes (SFH)		10
Assisted Living SFH		1

Additional Properties Served by Pathways		196
Apartment Units		181
Townhouses		12
Single Family Homes (SFH)		2
Assisted Living Facility		1

Pathway Homes operates on the Housing First model of care. Our work is based on the concept that a homeless individual's first and primary need is to obtain stable housing, and that other issues that may affect the household can be addressed once housing is obtained.

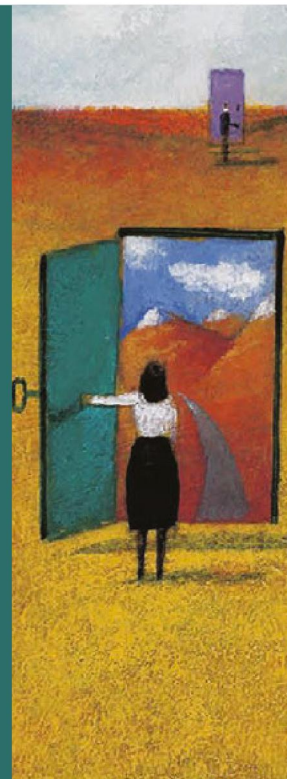
Last year, Pathway Homes received a \$1.2 million program grant from the U.S. Department of Housing and Urban Development (HUD). This unprecedented award was used to house 55 chronically homeless men and women who had been living in the woods, on the streets, and in emergency homeless shelters. These individuals were assessed to be at increased risk of dying on the streets due to a combination of untreated chronic, sometimes terminal, medical conditions, mental and/or physical disabilities, and other psychosocial challenges.

This spring Pathways received a \$1.4 million 2-year grant from the Virginia Department of Behavioral Health and Developmental Services (DBHDS). This award will be used to house an additional 35 individuals in permanent supportive housing over two years,

in partnership with Fairfax, Prince William, and Alexandria City Community Services Boards. These individuals, while not chronically homeless, were unstably housed, high frequency users of emergency rooms and psychiatric hospitals, and some would have otherwise ended up in jails. This award made it possible to permanently house this equally vulnerable population who do not qualify for HUD-funded permanent supportive housing. All 31 individuals targeted for the first year of the grant moved into their own individual apartments and are thriving.

As this publication goes to print, Pathway Homes begins to place into housing 22 more chronically homeless individuals similar to the 55 housed over the past year. An award in the amount of \$544,804 from HUD through the 2015 Fairfax County CoC HUD grant competition is making this possible.

No longer focused solely on safe, secure shelter, all of these men and women can now set other goals, and continue their personal journey toward achieving self-fulfillment and realizing their dreams.



The Need:

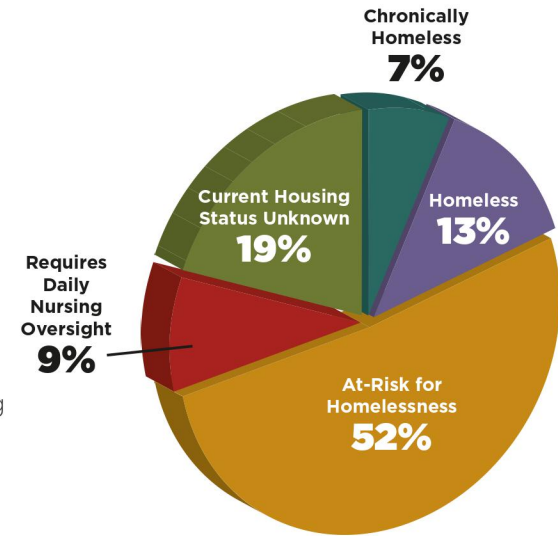
Through dedication and hard work, the numbers have been trending downward over the years. However the latest Point-In-Time survey for 2016 illustrates the continuing need:

- There are just over 12,200 homeless people in the region, including 11,059 in Fairfax County, and 400 in Prince William County.
- 2,096 single adults are considered chronically homeless, defined as a person with a disabling condition who has either been continuously homeless for a year or more or has had at least four episodes of homelessness in the past three years.
- In Fairfax County 202 single adults who are homeless also suffer with some form of severe mental illness, substance use disorder, or co-occurring condition. In Prince William County that number is 57.

The unique challenge of providing non-time-limited housing is that in order to serve more people we have to acquire more properties. As of this printing, there are nearly 600 men and women who are waiting for placement in a Pathways' home. While we face a continuing need for services, we also contend with tightening resources to meet those needs. Fully 50 percent of the people on our wait list do not meet eligibility requirements for funding programs that currently support most of our housing stock.

Waitlist for Housing

as of June 30, 2016



The Solution:

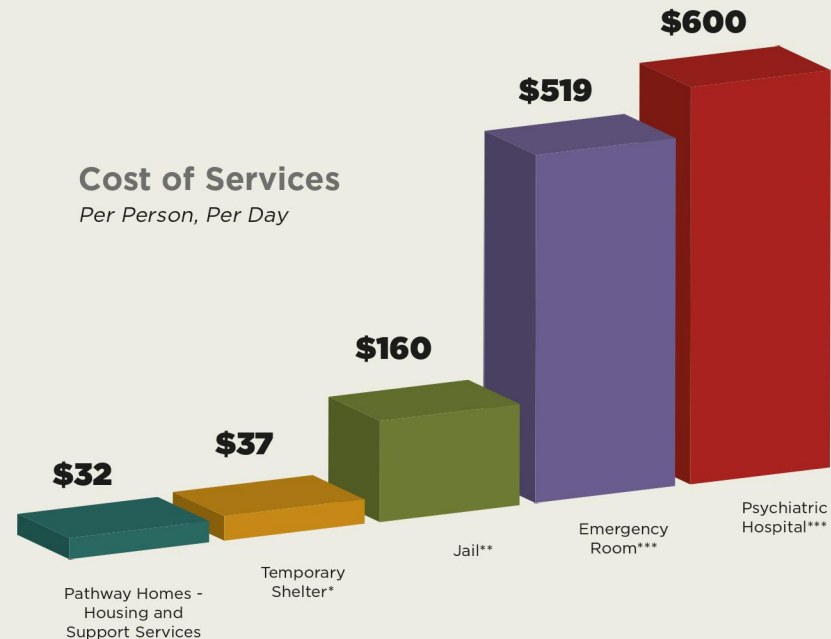
Our client outcomes over the years document the success of our model. Plain and simple, it works for the people we serve, and it's cost-efficient for the community. Since 1980, Pathway Homes has been providing non-time limited housing and supportive services for men and women with mental illnesses and co-occurring disorders. In fiscal year 2016 Pathway Homes provided housing and/or supportive services to 562 men and women in the region.

Pathway Homes' service delivery methods are also the model of cost-effectiveness and efficient use of community funds. Our costs represent a significant savings to the community compared to the costs of incarceration or hospitalization.

The unique challenge of providing non-time-limited housing is that in order to serve more people we need more homes. Property acquisitions, and the funding to support such expansion, are the key factors to meeting the needs in our community. Simply put, more people in need, with limited government funding, means we need help to fill the gap. No one should "fall through the cracks."

Cost of Services

Per Person, Per Day



(Sources: *Fairfax County Community Plan to Prevent and End Homelessness. **Virginia Compensation Board Jail Cost Report to the General Assembly FY2012. ***Virginia Coalition to End Homelessness' State of Permanent Housing Report 2015.)

The Medical Health Challenges

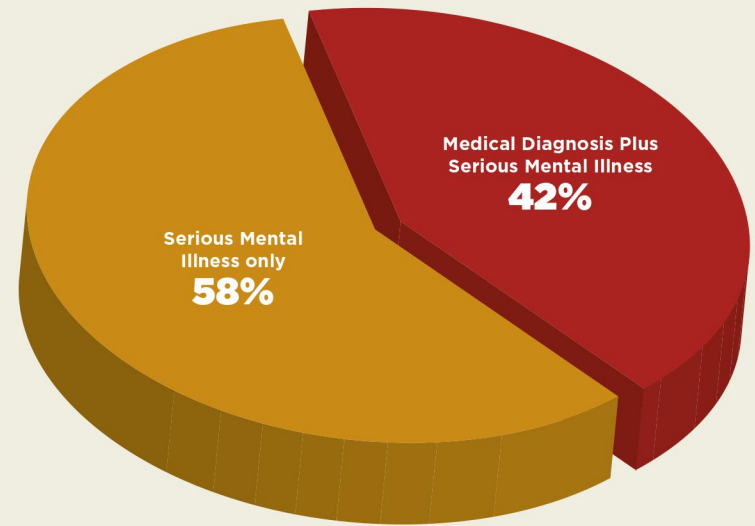
Research has shown that people with severe mental illnesses (SMI), such as schizophrenia, bipolar disorder, schizoaffective disorder, and major depressive disorder, have a higher mortality. Specifically, these studies show that the mortality rate for this population is two or three times as high as that of the general population, which translates into these individuals dying 13-30 years earlier than individuals in the general population*. The factors that impact this discrepancy include lifestyle choices, the long-term impact of psychotropic drugs, and the disparity in the availability and affordability of health care for individuals with SMI compared to the general population.

The individuals we serve are not only at higher risk of developing acute medical conditions, or having to deal with chronic medical conditions daily, they are also aging in place as more of them become housed and maintain housing stability. Almost half (42%) of the individuals Pathways served in FY 2016 had a diagnosis of at least one chronic medical condition in addition to a SMI. This growing trend is further reflected in 68 of these individuals requiring medical hospitalization during the year.

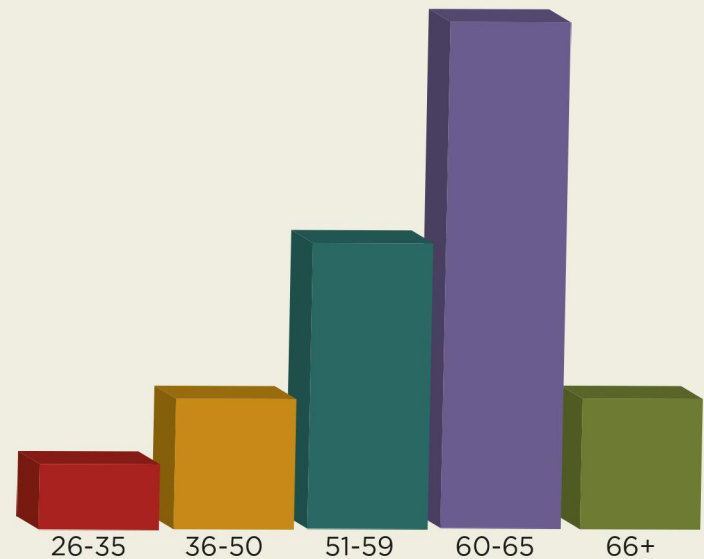
As these individuals age, their medical conditions become more challenging to manage and require more specialized services and skillsets to meet individual needs. For example, during the year, the highest number of medical hospitalizations (45%) was in the 60-65 age range, which accounts for only 18% of all individuals served. Often, the supports provided to individuals have to be adjusted to meet these medical and age-related needs so that individuals can stay in their homes as long as possible. As a result of these flexible and mobile supports, 72% of these individuals were able to return home and continued to be supported in managing these conditions in the community. Without this type and level of support, many of these individuals would be hard pressed to maintain stable housing in the community and might even end up in institutions.

* De Hert et al., (2011). Physical illness in patients with severe mental disorders: Prevalence, impact of medications and disparities in health care. *World Psychiatry*, 10(1), 52-77. Available <https://www.ncbi.nlm.nih.gov/pmc/articles/PMC3048500/>

Medical Diagnoses Among Individuals Served



Medical Hospitalizations by Age Range



BRING YOUR TEAM OUT



Teams of employees from Fannie Mae spent two days in May rejuvenating three Pathways' properties. Businesses, schools, and community groups partner with Pathway Homes to improve the quality of life of residents while fulfilling community service requirements. These volunteer work days demonstrate the spirit of giving, and ensure that limited funds are devoted to providing direct services.

PROVIDE YOUR EXPERTISE



From business practices to staff development, from plumbing and heating to landscaping, Pathway Homes benefits from pro-bono work provided by generous members of the local business community. Turner Construction is just one of the businesses who provided their expertise in the past year. Their staff worked to install this front entry handrail, aiding the safety of the residents.

SERVE ON OUR BOARD



Jennifer McGarey is the Corporate Vice President and Secretary of Northrop Grumman Corporation. In addition to the over fifteen years of corporate governance expertise Jennifer brings to Pathway Homes, she also brings a strong passion and commitment to the community. Join Jennifer and other local business and community leaders working together to embody the spirit of recovery.

PROVIDE FINANCIAL SUPPORT



Financial contributions greatly enhance our ability to provide support services and maintain our properties. Public sector funding from our government partners has to be supplemented by generous support from individuals, businesses, corporations, and foundations in order to meet the increasing needs of those who are seeking services. Your donations are critical to our mission to serve individuals in need.

ADVOCATE



We need your help to build support for public policies which protect and improve housing and mental health services, increase access to mental health services, and support effective recovery services for individuals with mental illnesses. Learn how you can be prepared and confident whether you are making a phone call, writing a letter, or meeting in-person with your elected officials.

You can make a difference too!

Contact Anna Smith,
Director of Development at

703.876.0390

or visit our website

www.pathwayhomes.org

PLATINUM LEVEL

Bank of America Foundation
Capital One Services
Mr. and Mrs. John J. and Joyce Flynn
The Morris and Gwendolyn Cafritz Foundation
The Potomac Health Foundation
Virginia Housing Development Authority

GOLD LEVEL

Center For Nonprofit Advancement
Anonymous
Mr. and Mrs. James A. and Miriam Ross

SILVER LEVEL

America's Charities
Mr. James H. Bresson
Mr. and Mrs. Stephen and Sharon Canner
Mr. Patrick Chaing
Credible Behavioral Health Software
Durig Family Foundation, Inc.
The Freddie Mac Foundation
Mr. William Iwig
Jean Schiro-Zavela & Vance Zavela Foundation
Mr. and Mrs. Takehiko and Linda Kato
Kings Park Shopping Center
Krafft A/C Service Corp.
Dr. Sylisa Lambert-Woodard

Mr. Martin G. Lichtenstein
Mrs. Jennifer McGarey
Mr. and Mrs. Ken and Jennifer McKenzie
Mr. and Mrs. Timothy and Diane Naughton
Northrop Grumman Corporation Charity Trust
Mr. Richard Abram and Mr. Paul Chandler
Mr. Eric Riddell
Mr. and Mrs. Richard and Christine Rudisill III
Mr. Gregory Ryan Snyder
St. Luke Catholic Church
Mr. and Mrs. Robert and Patti St. Thomas
Dr. Theresa Clement Tisdale and Mr. Roger White
United Way/CFC of the Nat. Capitol
Wells Fargo
Ms. Marian White

BRONZE LEVEL

Mr. Roman P. Abanador
Ms. Terri E. Abblett
Ms. Nita Acey
Ms. Dara Aldridge
AmazonSmile Foundation
Applied Engineering Management Corp.
Elks Auxiliary Arlington/Fairfax BPO Elks 2188
Ms. Rahwa Y. Asghedom
Ms. Maiko C. Ashby
Mrs. Patti Aston
Ms. Claydine Bailey
Mrs. Jean Baines
Ms. Sondra Barksdale
Mr. J. Lamar and Mrs. Jannette Beasley
Mr. and Mrs. Ron and Judy Beckwith
Ms. Winell Belfonte
Ms. Emelia Beltran Trust
Ms. Katie Benson
Mr. Kenneth Bingham
Mrs. Mary Lou Bishop
Ms. Elizabeth Blakney
Mr. Samuel H. Bleier
Mr. and Mrs. Barry and Judy Bleiweis
Mr. and Mrs. Carlyle A. and Margaret A. Blomme
Mr. and Ms. Edward and Joanne Boland
Mr. Walter Boland Jr.
Ms. Michele Botte
Mr. and Mrs. Merritt Bragdon
Ms. Brenda Brennan
Ms. Geraldine Bridge
Mr. and Mrs. William F. and Lynne E. Brum Sr.
Mr. Ron Bub

Delegate David Bulova
Mr. and Mrs. Thomas E. and Janice H. Burns
Mr. and Mrs. Ralph and Melinda Burroughs Jr.
Ms. Suzanne Burrows
Ms. Lynette Cameron
Mrs. and Mr. Christina and Matthew Caraballo
Mr. Michael Carleton and Ms. Jeuli Bartenstein
Colliers International
Mr. and Mrs. Kim Paul and Nancy Cawley
Mr. Paul Chauvin
Mr. and Mrs. Chun-I and Emily Chiang
Mr. and Mrs. Romesh C. and Shashi K. Chohda
Ms. Moon Choi
Ms. Karen Cholko
Mr. Kumpee Chuinklin
Mr. Michael Collins
Mrs. Arlette Constandy
Ms. Joan Coolidge
Cooper Ginsberg Gray
Ms. Melvia E. Corcoran
Mr. Wiley E. Cross
Mr. and Mrs. Ruben and Valerie Cuffee
Ms. Samantha Cunningham
Ms. Tammi Curran
Mr. and Mrs. Thomas and Margarita Dale
Mr. Tu Dam
Ms. Sherry Lynn Dana
Mrs. Brittany Darner-Cruise
Mr. and Mrs. Tom A. and Elizabeth Davidson
Mr. Yafet Deferesu
Mr. and Mrs. Winston and Sharon R. Demonsabert Jr.
Ms. Abigail Denecke
Ms. Gloria DesRochers
Ms. Nigisti G. Desta

Ms. Molly Dias
Mr. and Mrs. Barry and Ellen Dickman
Mr. Ronald D. Dietrich
Mr. and Mrs. Vivek and Anjali Dighe
Ms. Mary Driver-Downs
Mr. and Mrs. Eugene C. and Joan Durman
Mrs. Betsy Dye Nichols
Ms. Jennifer Earyes
Mr. Baffour Ennin
Mr. Mark R. Esherick
Jay & Louise Evertt
ExxonMobil Foundation
Ms. Venecia M. Fernandez
Ms. Suzanne M. Ferrell
Flax Associates
Ms. Sheila Fontroy
Mr. and Mrs. Herbert and Anita Ford
Costco Wholesale Corporation
Mr. Emil Franks
Mr. Greg Franks
Mr. and Mrs. Harry & Pam Freer
Ms. Nicole Frias
Mr. and Mrs. Greg and Linda Gainer
Mr. and Mrs. Anthony Gallagher
Mr. Donald J. Gantzer
George Mason Mortgage
Mr. and Mrs. Steven and Joyce Gibson
Ms. Tamara Gifford
Ms. Beth Gilles-Whitehead
Ms. Betty Gordon
Ms. Anna Gradishar
Ms. Wendy Gradison
Mr. and Mrs. Daniel Gray
Mr. Gregory Green

Pathway Homes wishes to thank the 308 individual volunteers and 11 volunteer groups that gave 3,700 hours of service in the past year. Using Independent Sector's valuation of \$23.56/hour, these volunteer hours are valued at just over \$87,172.

Ms. Suzanne E. Grimsley
Mr. Tekalegn Guddeta
Mr. and Mrs. Daniel and Mary Hacker
Mrs. Michelle Halcombe
Mrs. Cenith Hall-Tibbs
Mr. and Mrs. Milton and Courtenay Hamilton
Ms. Shaniqua Harding
Ms. Joseline Harris
Ms. Deborah C. Hayes
Mr. and Mrs. Robert J. and Marie P. Heilen
Helios HR
Ms. Katherine Hetrick
Mr. and Mrs. George R. and Georgine W. Higdon
Ms. Sandy Hill
Mrs. Mildred Holdaway
Mrs. Teresa Hollandsworth
Mrs. Meredith Hovan
Ms. Jerilynn B. Hoy
Ms. Judith Hoy
Ms. Leslie Hurdle
Mr. and Mrs. Frank & Sandra Jablonski
Ms. Barbara Jamborsky
Mr. Oscar Jones III
Ms. Jennifer Judelsohn
Justgive Friends of Pathway Homes
Mr. and Mrs. Don and Mary Kane
Mr. and Mrs. Harry L. and Mildred K. Kay
Mr. and Mrs. Doug and Cathy Kellermann
Mr. and Mrs. Rob and Cynthia Kennedy
Ms. Susie Lee
Ms. Jean LeForge
Mr. and Mrs. Joe and Shirley LeForge
Mr. and Mrs. Mark and Joan Leonard
Mr. and Mrs. David and Lauren Leventhal

Ms. Singha Liskey
 Mrs. and Mr. Mansi and Kip and Loder
 Ms. Genevieve Long
 Mr. James Louviere
 Ms. Traci Luzi
 Ms. Norine Lyons
 Ms. Jeanne Mahoney
 Ms. Diane Malaquias
 Ms. Sarah Manaker
 Ms. Judy F. Manhan
 Mr. and Mrs. Oran A. and Annabelle G. Massey
 Ms. Carol A. McAlee
 Ms. Andrea C. McCarthy
 Mr. and Mrs. Harvey R. and Bessie G. McConnell Jr.
 Mr. and Mrs. Frank A. and Arlene F. McDermott
 Ms. Sarah McEntee
 Ms. Dotti McKee
 Mr. and Mrs. Ed and Kerryn W. McMeans
 Ms. Nicolette N. Mejia
 Ms. Susan Mekenney
 Mr. David Meyer
 Ms. Sherry Meyers
 Ms. Linda H. Miller
 Mr. Roger L. Miller
 Ms. Sakin Mire
 Ms. Kieran Mitchell
 Mr. Mark Morgan
 Mr. Gerard Morris
 Mr. Jaleh Moslehi
 Mrs. Sylvia E. Mulherin
 Mr. Mike Mullen
 Mr. and Mrs. Patrick and Anne J. Murphy
 Mr. and Mrs. Thomas J. and Ann G. Murphy
 Mylestone Plans
 Ms. Avril Nasser
 Network For Good

Ms. Carrie Newcome
 Ms. Hoai V.K. Nguyen
 Mrs. Lois Nichols
 Ms. Jill Norcross
 Mr. Eric G. Noriega
 Northern Virginia Association of Realtors, Inc.
 Mr. and Mrs. Mark and Amparo E. O'Connell
 Mr. and Mrs. Irvin and Mary Padgett
 Mrs. Suzanne Paletti
 Peet's Coffee and Tea
 Ms. Ashley Inks Pepino
 Mr. and Dr. Antonio F. and Carol B. Perez
 Mrs. Kristian Pervin
 Mr. and Mrs. Joseph and Mary Pettit
 Mr. and Mrs. Alex and Lynne Phillips
 Mr. and Mrs. Dean and Hallie Pollet
 Ms. Judith N. Prentiss
 Mr. Nathaniel Prince
 Ms. Carole Puglisi
 Mr. and Mrs. Francis and Patricia Pulju
 Ms. Dianne Quebral
 Quintiles
 Ms. Martha H. Ragagli
 Ravensworth Baptist Church Friendship Class
 Mr. Michael Raynor
 Mr. and Mrs. Dave M. and Lorraine C. Redman
 Mr. and Mrs. Burton and Jenni Reynolds
 Mr. and Mrs. Gregg and Jean Reynolds
 Col. and Mrs. Celeste T. Richardson (Ret.)
 Ms. Christine Richardson
 Ms. Anita Robinson
 Mr. Douglas Robinson
 Ms. Francis D. Roche
 Mr. Lawrence Rockwell
 Ms. Eleanor H. Rogers
 Dr. and Mrs. John and Joan Rogers
 Ms. Sheeba Rooney
 Mr. Jon-Michael Rosch

Mr. Jonathan C. Ross
 Ms. Tova Roth
 Mrs. Michelle Rovins
 Mr. Thomas Rowe
 Mr. and Mrs. Anthony A. and Janet L. Rozga
 Mr. and Mrs. John and Donna Sabo
 Ms. Elva Salcedo
 Mr. Elhamy Samuels
 Ms. Eleanor D. Schmidt
 Ms. Jampee Yui Sebera
 Ms. Susan Senter
 Mr. and Mrs. Paul and Eileen Serice
 Mr. Nicholas Serrano
 Mrs. Susan Sheehan
 Mrs. Mary Jane Shepley
 Mr. and Mrs. Mark and Karen Shields
 Mr. Randy L. Shusman
 Silver Spoons Caterers
 Mr. Matthew Simon
 Mr. and Mrs. Fred L. and Joan R. Singer
 Mr. Arvinder Singh
 Mr. and Mrs. Leonard and Joyce Skoglund
 Ms. Noelle Sment
 Mrs. Anna Smith
 Mr. and Mrs. David and Vivian Smith
 Ms. Anne Smyers
 Ms. Elaine Flynn Sommer
 Ms. Tobin Sorenson
 South County Staff
 Ms. Emily Springer
 Ms. Margaret Squires
 Ms. Judy Stewart
 Ms. Barbara Stinger
 Ms. Ashley Taylor
 Ms. Harriet L. Tenney
 The K Foundation Members
 Mrs. Nicole Thomas-Campbell
 Mrs. Jean Thompson

Dr. and Mrs. Jim and Mary Thorne
 Mr. Gary F. Tobey and Ms. Ny Cam Huynh
 Mrs. Trang Ton
 Ms. Nita Tougias
 Ms. Eliana V. Turina
 Ms. Madline Turner
 Mr. and Mrs. Daniel W. and Nancy L. Ullrich
 Mr. Daniel Unger
 United Way of Delaware
 United Way of Greater Houston
 Mr. Shawn Valentine
 Valvoline
 Ms. Erin M. Varley
 Ms. Karin Ventura
 Dr. Eleanor Vincent
 Virginia Commonwealth Corporation
 Venutec Corporation
 Mr. and Mrs. Jack & Esther Vorona
 Ms. Margaret A. Wade
 Ms. Dinah Walter
 Mr. David Warnock and Ms. Beverly J. Savich
 Mr. Bertram F. Weintraub
 Mr. Mark Werblood
 Ms. Ellen Whalen
 Ms. Det Whedon
 Mrs. Ruth C. Wheeler
 Mr. and Mrs. John and Kathryn White
 Mrs. Pam Wicksel-Zayer
 Mr. and Mrs. James and Elizabeth Wilder
 Ms. Pauline Wilson
 Ms. Diane Winsboro and Mr. Guenther S. Koch
 Mr. and Mrs. Robert and Michelle Worster, III
 Ms. Purita Yee
 Mr. and Mrs. Michael and Sandra Zywokarte
 Ms. Susan Zywokarte

IN-KIND

Ms. Dara Aldridge
 Ms. Margaret Anthony
 Mr. Yasha Arant
 Ms. Nancy Bevis
 Mrs. Mary Lou Bishop
 Bowl America
 Mrs. Brenda Brennan
 Mr. Donald Brown
 Ms. Fatima Calcuttawalla
 Capitol Steps
 Christopher Companies, Inc.
 Ms. Teresina Christy

Ms. Graciela Cokgoren
 Ms. Mary Corack
 Mrs. Catherine Crowe
 Ms. Lynda Davis
 Mrs. Nigisti Desta
 Mrs. Mary Driver-Downs
 Ms. Nancy Engleman
 Mrs. Suzanne Ferrell
 Ms. Anne Finley
 Firenza
 Five Guys Operations LLC
 Girl Scout Service Unit 54-14

Mr. John Harold
 Mr. Tom Heinz
 Mrs. Chandra Holsey-Cookson
 Ms. Liz Joseph
 Ms. Regina Kearney
 Ms. Adrienne Kish
 Mrs. Susan Kousek
 Ms. Amber Ludwinski
 Ms. Allison Lunsford
 Mr. J. Lynth
 Mrs. Anne Marie-Finley
 Mr. Sheikh Maruf

Ms. Kristina McCullough
 Mr. David Meyer
 Mr. Carl Monk
 Mr. and Mrs. Elton and Alyssa Morel
 Ms. Donna Morningstar
 Ms. Catherine Moulthrop
 Ms. Joanna Newman
 Ms. Greta Nolan
 Ovation Brands
 Mr. and Mrs. Dean and Hallie Pollet
 Mr. Robert Pratt

Mr. Amarjit Rathore
 Ratner Companies - Hair Cuttery
 Ms. Joan Richwine
 Smashburger
 Mrs. Anna Smith
 Mr. John Solnina
 Mr. and Mrs. Robert and Patti St. Thomas
 Starbucks
 Sysco
 Ms. Aleia Taylor
 Mrs. Jeannette Tisdale

Mr. John Tisdale
 Ms. Kim Torpey
 US Foods
 Walmart Supercenter
 Mr. Robert Watkins
 Wegmans
 Westwood Baptist Church
 Ms. Donna Wilcock
 Ms. Diane Wingett
 Mr. and Mrs. Robert and Michelle Worster, III

BOARD OF DIRECTORS

Daniel L. Gray, Chair
Partner, Cooper Ginsberg Gray, PLLC

Patrick Chaing, Vice Chair
Associate General Counsel, Navient Solutions, Inc.

Jon-Michael Rosch, Secretary
Certified Public Accountant, PB Mares, Inc.

Tom Rowe, Treasurer
Chief Financial Officer, Vie de France Yamazaki, Inc.

Dara Aldridge
Senior Mortgage Processor, Access National Mortgage

Maiko Ashby
Executive Recruiter

Emily Chiang
Retired Certified Financial Planner & Author

Jennifer Judelsohn, LCSW
Licensed Clinical Psychotherapist, Neshama Soulworks Studio

Angie Lathrop
Global Corporate Social Responsibility Community Affairs Executive, Bank of America

Jennifer McGarey
Corporate Vice President and Secretary, Northrop Grumman Corporation

Douglas Robinson
Director of Media Relations and Reputation Management, NeighborWorks America

James Ross
Retired Program Manager, Computer Sciences Corporation (CSC)

Sue Zywokarte
Student, George Mason University

LEADERSHIP

Sylisa Lambert-Woodard, EdD, LCSW, LSATP, MAC
President and Chief Executive Officer

Brenda Brennan
Chief Financial Officer

LaToya Johnson
Director of Human Resources

Sherry Meyers, LCSW
Senior Vice President for Clinical Services

Anita Robinson, LCSW
Vice President for Clinical Services

Anna Smith
Director of Development & Major Gifts

Eleanor Vincent, EdD, LPC, CSAC
Chief Operating Officer

The Pathway Homes Giving Society

We express our sincere appreciation to the members of the Pathway Homes Giving Society. These special donors have committed to five years of financial support. This long-term commitment gives the agency better flexibility and planning capabilities to make a difference in the lives of those we serve.



TRAILBLAZERS

Pledges of \$10,000 per year for five years

Mr. and Mrs. John and Joyce Flynn

EXPLORERS

Pledges of \$5,000 per year for five years

Mr. and Mrs. James and Miriam Ross

PIONEERS

Pledges of \$1,000 per year for five years

Mr. Patrick Chaing
Mr. William Iwig
Mrs. Jennifer Judelsohn & Mr. David Stearman
Dr. Sylisa Lambert-Woodard
Mrs. Angie Lathrop
Mrs. Jennifer McGarey
Mr. Eric Riddell
ServePro
Mrs. Anna Smith
Dr. Eleanor Vincent

Partner Organizations

Pathway Homes is proud to have worked in partnership during FY2016 with the following agencies and organizations that have provided grant, contract, or oversight support for our programs and services.

- City of Alexandria Community Services Board (CSB)
- Commission on Accreditation of Rehabilitation Facilities (CARF)
- Consolidated Community Funding Pool (CCFP)
- Department of Behavioral Health and Developmental Services (DBHDS)
- Department of Medical Assistance Services (DMAS)
- Department of Social Services (DSS)
- U.S. Department of Housing and Urban Development (HUD)
- Virginia Housing Development Authority (VHDA)
- Fairfax County Health Department
- Fairfax County Department of Housing and Community Development (DHCD)
- Fairfax County Office to Prevent and End Homelessness (OPEH)
- Fairfax-Falls Church Community Services Board (CSB)
- Fairfax Community Long Term Care Coordinating Council
- Prince William County Community Services Board (CSB)
- Prince William County Department of Housing and Community Development